

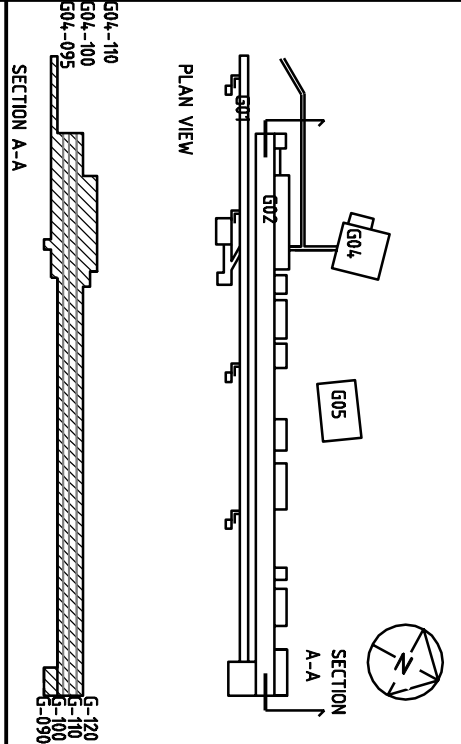
Stream id	101	102	103	104	105	106	107	108	109	110	111	112	113	114	115	116	117	118	119	120	121	122	123	124	125	126	127	128	129	130	131	132	133	134	135	136
Media	DIW	DIW	DIW	DIW	DIW	DIW	DIW	DIW	DIW	DIW																										
Op. Mass flow (kg/s)	N/A	N/A	N/A	N/A	N/A	N/A	N/A	N/A	N/A	N/A																										
Op. Volume flow (m3/h)	N/A	N/A	N/A	N/A	N/A	N/A	N/A	N/A	N/A	N/A																										
Max. Mass flow (kg/s)	N/A	N/A	N/A	N/A	N/A	N/A	N/A	N/A	N/A	N/A																										
Max. Volume flow (m3/h)	N/A	N/A	N/A	N/A	N/A	N/A	N/A	N/A	N/A	N/A																										
Temperature (°C)	25	25	25	25	25	25	25	25	25	25																										
Pressure (bar g)	8.0	8.0	8.0	8.0	8.0	8.0	8.0	8.0	8.0	8.0																										
Density (kg/m3)	997	997	997	997	997	997	997	997	997	997																										

1	TECHNICAL BASELINE	2015-12-03	SELAUR
REV	REVISION TYPE	DATE	SIGN

TECHNICAL BASELINE

ESS CONVENTIONAL FACILITIES

ACCELERATOR BUILDING



European Spallation Source ESS AB
ESS, Lundagård 2a
SE-221 00 Lund
SWEDEN
www.ess.se



CONSULTANT
SWECO INDUSTRY AB
SYSTEM OWNER
LIVUS MECK
MIKAEL KJELVE

DRAWN BY SELAUR	HANDLED BY SEHBAC	PROJECT NUMBER 5652125002
DATE 2015-12-03	APPROVED BY SEHBAC	CHECKED BY SEHBAC

BUILDING 601, 602, 604, PROCESS
FLOW CHART PROCESS
DEIONIZED WATER

SCALE

DRAWING NUMBER PS0052D--8-G-----203	REV 1
--	----------